

FOR SALE OR LEASE



PROFESSIONAL OFFICE COMPLEX

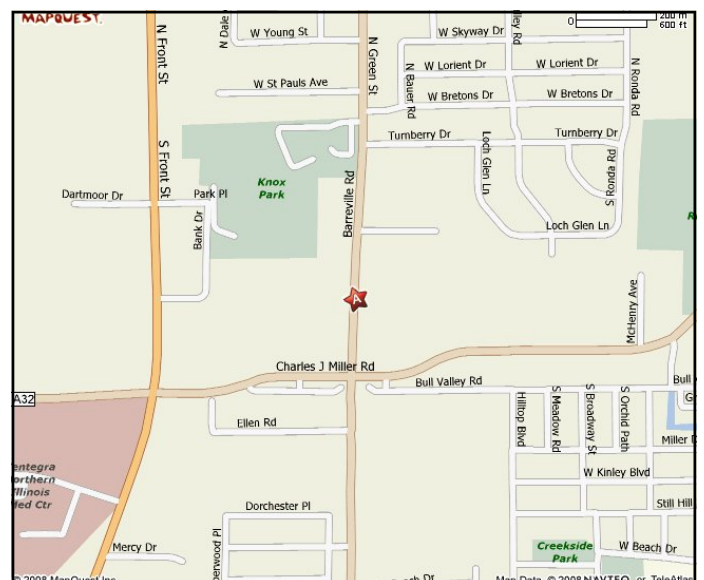
3601 Municipal Drive
McHenry, IL

- 1200-8600 sf (min/max, divisible)
- Desirable Location
- Each Unit Has Private Entrance
- Next to McHenry Municipal Building
- Close to Northern Illinois Medical Center, Banks, Restaurants & Proposed Recreational Area

Sale Price - \$155/sf

Lease Rate - \$10/sf

DEMOGRAPHICS			
Drive Times	10 Min	20 Min	30 Min
Population	41,211	222,108	579,400
Households	15,200	78,600	195,800
Med. HH Inc.	70,000	95,000	105,000
Med. Age	35	35.7	34

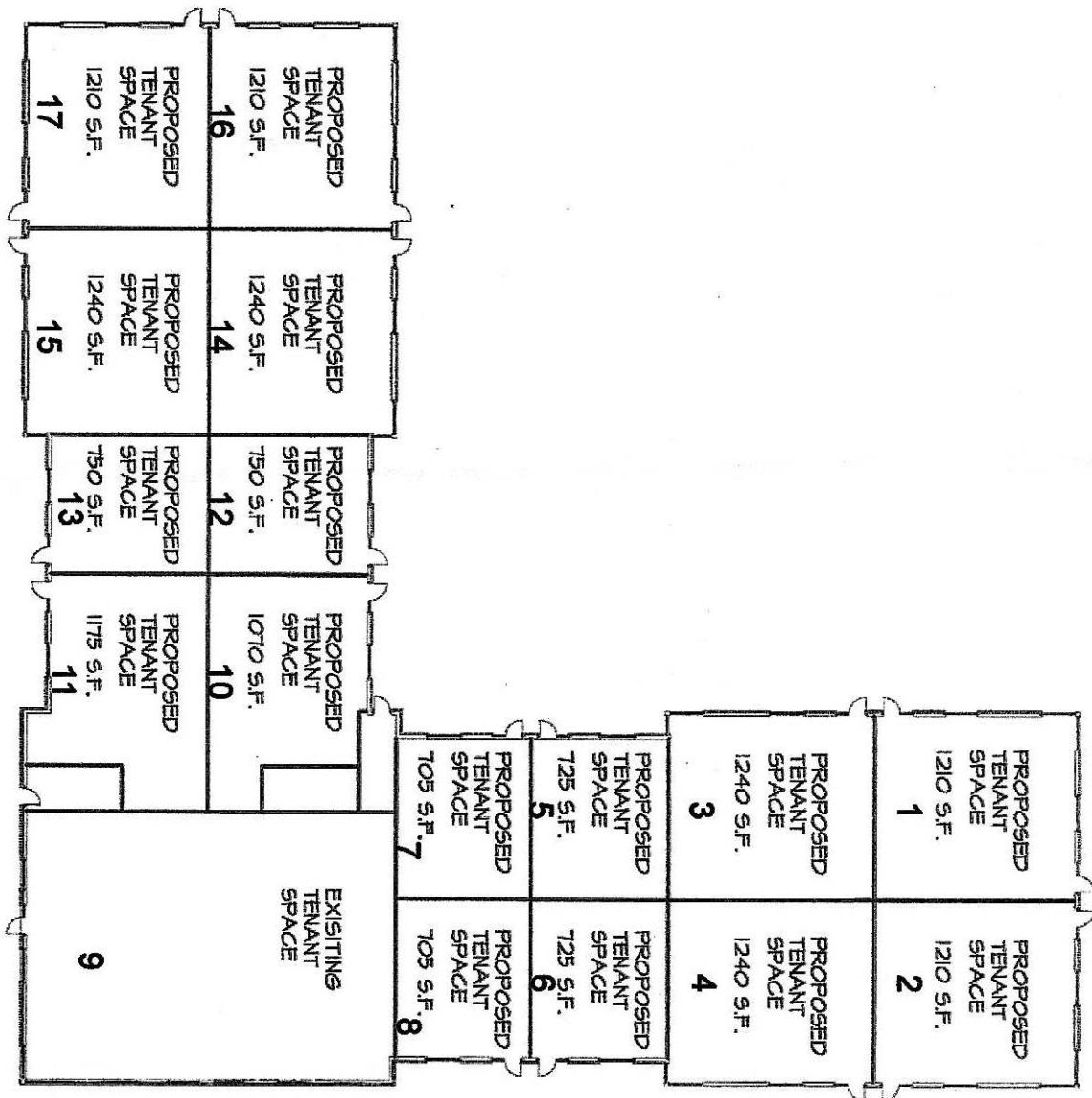


Pete Petrouski, CCIM

847-287-6491

PPetrouski@ccim.net

www.NationalRealtyNetwork.net



FLOOR PLAN

1" = 30'-0"



RIDGEVIEW POINTE



Pete Petrouski, CCIM

847-287-6491

PPetrouski@ccim.net

www.NationalRealtyNetwork.net